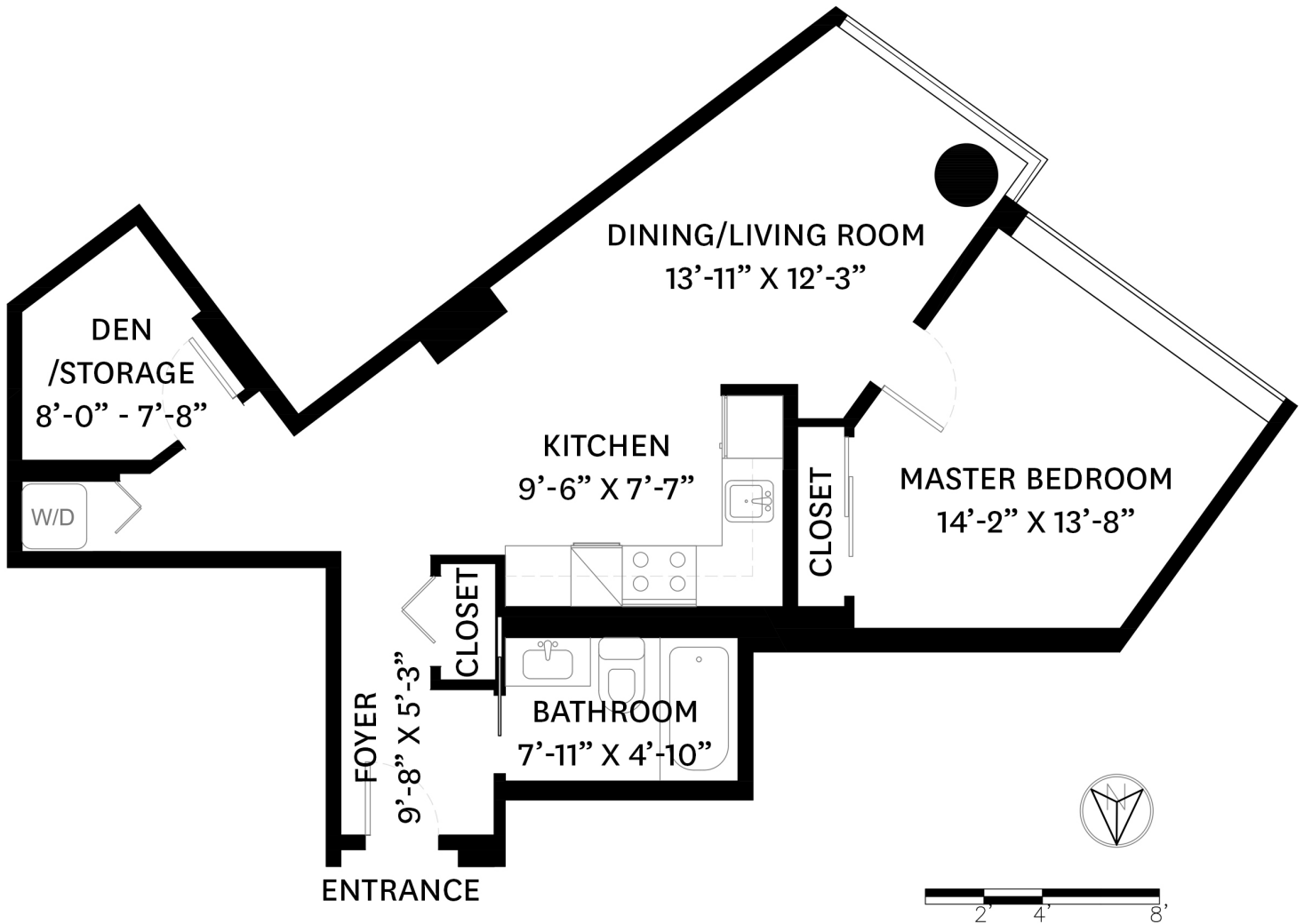


210-445 WEST 2ND AVENUE, VANCOUVER, BC

MAIN FLOOR TOTAL: 675 SQ. FT



MAIN FLOOR PLAN
Ceiling Height: 7'-11"



Ben Kay PREC*
604-710-5270
ben@BenKay.ca

floor plan designed by
ishot.ca Enterprises Inc.
604-368-7979
<http://ishot.ca>

*PERSONAL REAL ESTATE CORPORATION. THE FLOOR PLAN ILLUSTRATION IS NOT SUITABLE FOR CONSTRUCTION/ARCHITECTURAL PURPOSES. MEASUREMENTS ARE APPROXIMATE AND MAY NOT BE TO SCALE. E&O INSURED.